 <p>Viale dell'artigianato, 305/319 40026 Castelbolognese(RA) ITALIA</p>	<p>Instructions Manual Version N° 00 del 08/10/2005</p>	<p>OTO P/V ELEGANCE</p> <p>1/11</p>
---	---	---



English

INSTRUCTIONS MANUAL

OF THE CHAIR

OTO P/V ELEGANCE



OTO P/V ELEGANCE

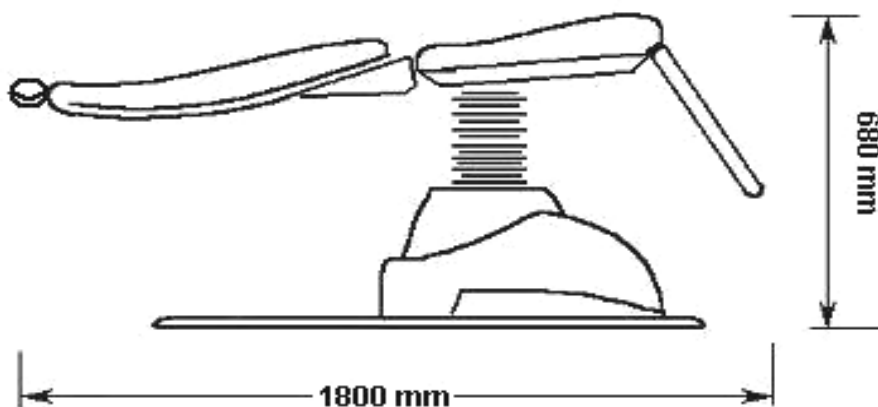
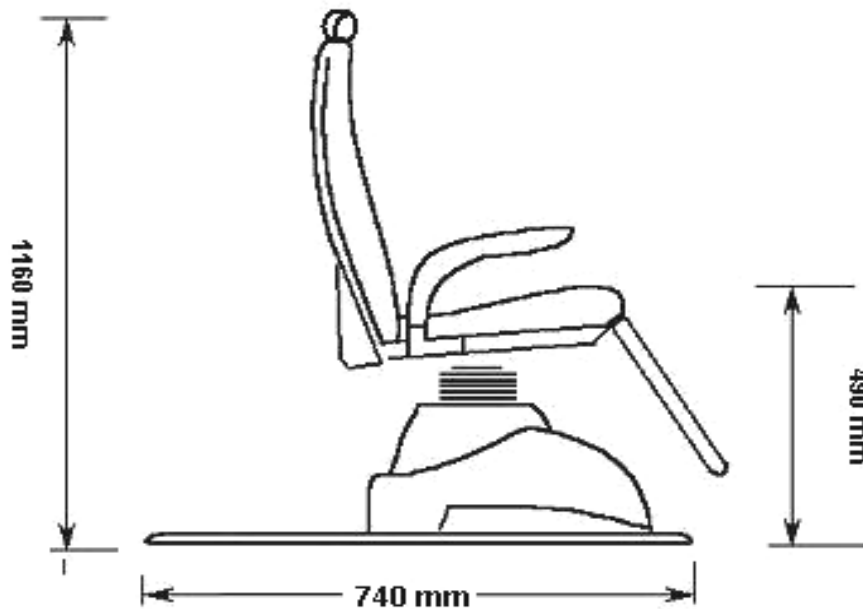
	<p>Read this manual before operating on the chair</p>
---	--


<p>VERSION N.00</p>	<p>REDATTO – drawn up by <i>Marrone F. Andraghetti G.</i></p>	<p>DATA date 08/10/2005</p>	<p>APPROVATO Approved by <i>M. Longo</i></p>	<p>DATA Date 08/10/2005</p>
-------------------------	--	--	---	--

This document has been realised by EUROCLINIC S.r.l. Unipersonale.
It is prohibited to duplicate or divulge it without authorisation.
Tel +39 0546 656031 Fax +39 0542 656691 e-mail info@euroclinic www.euroclinic.it

TECHNICAL FEATURES

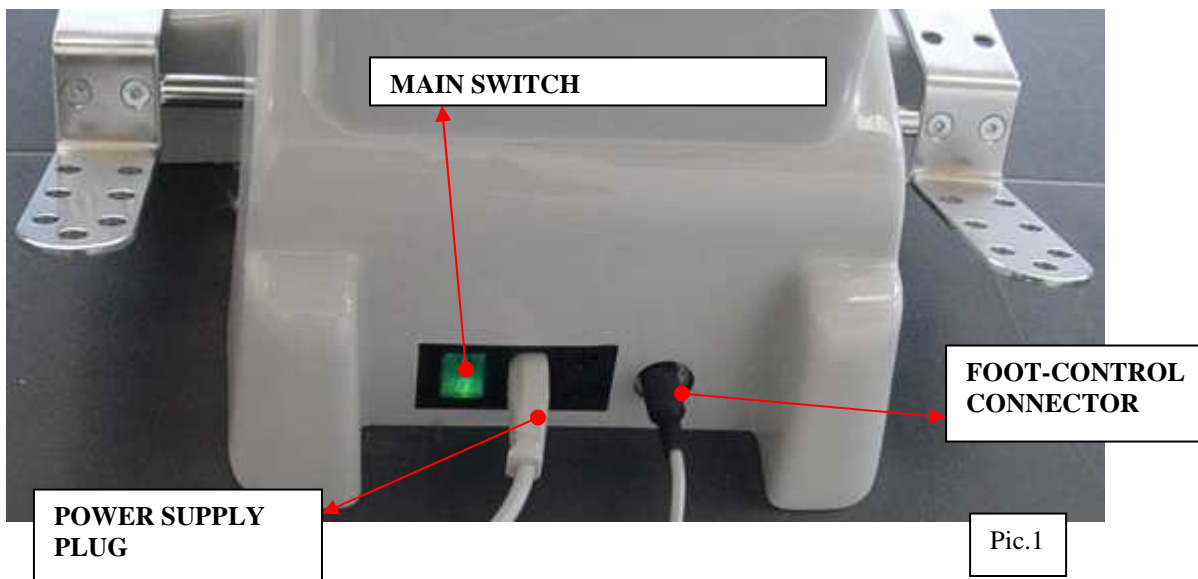
Power supply voltage	: 230v 50Hz
Voltage to motors	: 24v
Lifting motor push	: 4000 N
Backrest push	: 800 N
Lifting capacity	: Kg 145
Power	: 90 V.A.
Fuse protection	: 1,6 A



 Euroclinic Viale dell'artigianato, 305/319 40026 Castelbolognese(RA) ITALIA	Instructions Manual Version N° 00 del 08/10/2005	OTO P/V ELEGANCE
		3/11

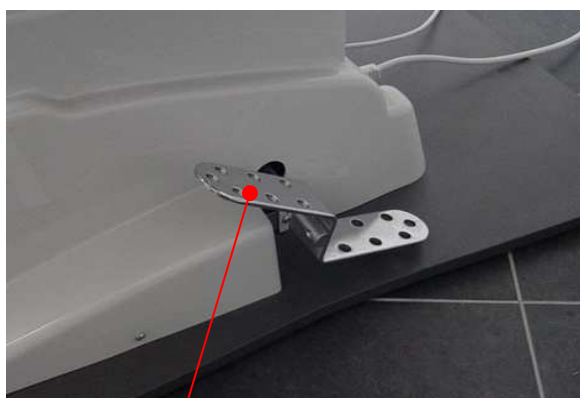
• **INSTALLATION**

Lift the chair from the packing pallet and lay it on the pavement slowly and without bending it. Connect the power supply plug to an electric socket, connect the foot-control connector and switch on the main switch (see Pic. 1).

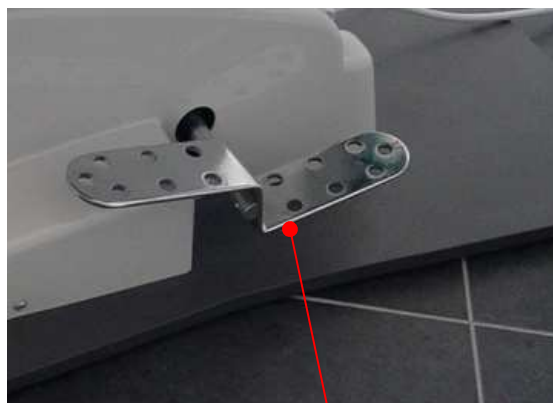


• **FUNCTIONING**


OTO P/V ELEGANCE chair is enabled to make a 360° rotation . To enhance loose rotation it is enough to keep chromed levers “A” in HIGH position (see picture) with respect to frontal view and vice-versa to lock the chair on the desired position it is enough to keep the levers “A” in LOW position (see picture) .



LEVER “A” HIGH POSITION = CHAIR FREE TO ROTATE AND MOVE



LEVER “A” IN LOW POSITION = CHAIR LOCKED

 Euroclinic Viale dell'artigianato, 305/319 40026 Castelbolognese(RA) ITALIA	Instructions Manual Version N° 00 del 08/10/2005	OTO P/V ELEGANCE
		4/11

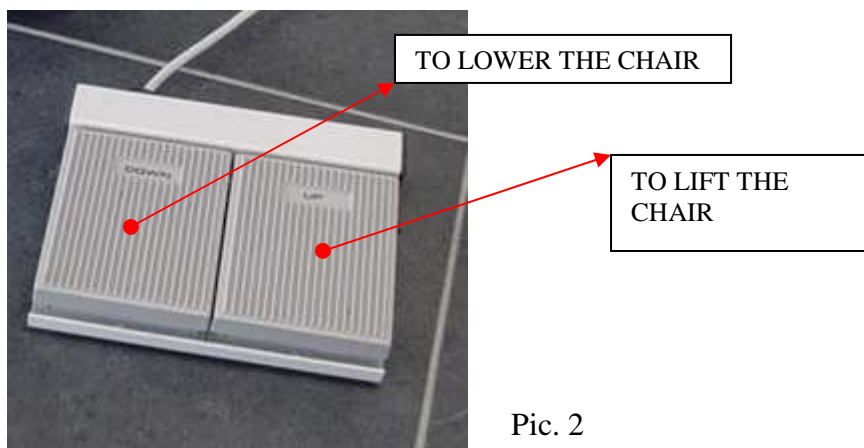


WARNING!

When rotation is locked (LEVERS DOWN) all electrical movements of rising and lowering of the chair **ARE STOPPED.**

• **LIFTING AND LOWERING MOVEMENT**

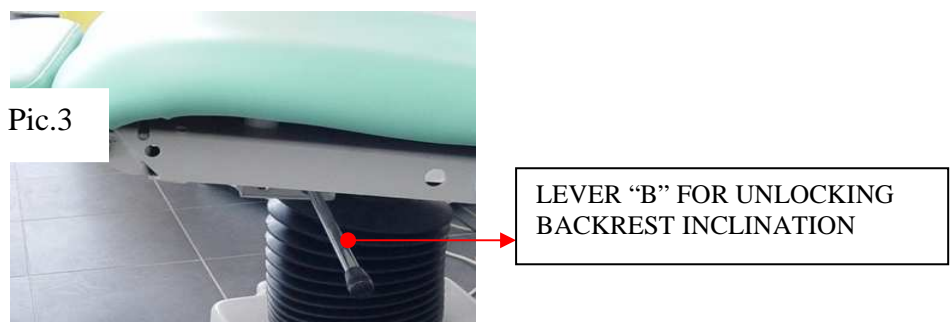
Before lifting the chair, please check that the rotation is locked by pushing on the front-part of levers “A” – as specified in the previous paragraph.. To lift the chair push the foot-control in the “UP” position; on the contrary to lower it push the foot-control on the “DOWN” position (see Pic. 2)




Pic. 2

• **REGULATION BACKREST INCLINATION**

It is possible to control the backrest inclination through the lever “B”(Pic. 3); when pushing backward the lever the movement is locked and by forcing the backrest downward you will change the chair’s position until you reach horizontal position. Once reached the desired position it is enough to release the lever again. The wider basement allows the chair to stay on horizontal position (BED POSITION) without any risk of its tipping.



Pic.3

 Euroclinic Viale dell'artigianato, 305/319 40026 Castelbolognese(RA) ITALIA	Instructions Manual Version N° 00 del 08/10/2005	OTO P/V ELEGANCE 5/11
--	--	---

 **WARNING!**

If the backrest is reclined and if on the chair there is no patient, when unblocking the backrest through the LEVER “B”, it is advisable to help with a hand the backrest to move forward, so to avoid a too fast and rough movement. In this case the gas spring is discharged with the patient’s weight!

- **MOBILE ARMREST**

To make easier the patient’s sitting and standing position, the armrests can be laterally oriented, as shown in picture 4.

It is necessary to lift upward the armrest and rotate it to the outside. To take it back to original position you should repeat the movement the other way round.



Pic. 4


- **DAILY MAINTENANCE AND CLEANING**

The materials used in the construction of the OTO P/V ELEGANCE are suitable for easy cleaning and disinfection.

Most of pharmaceuticals and chemical products used in a doctor’s room could damage the painted surfaces and the parts in plastic material.

Tests and inquiries showed that surfaces cannot be completely protected against damages of all products sold on the market.

The effects of those products are essentially related to the time they remain on the surfaces.

 Euroclinic Viale dell'artigianato, 305/319 40026 Castelbolognese(RA) ITALIA	Instructions Manual Version N° 00 del 08/10/2005	OTO P/V ELEGANCE 6/11
--	--	---

It is important to remove immediately with a damp cloth those substances from the surfaces of the equipment.

Please use only a damp cloth for cleaning; do not spray detergents directly on the chair.



WARNING!

Do not use products containing alcohol, ammonia, abrasive substances or benzol.

The concentrations specified here below are the maximum allowed and cannot be exceeded:

Quaternary Ammonium: maximum 2%

Glutaric Aldehyde: maximum 2%

EUROCLINIC WILL NOT BE HELD RESPONSIBLE FOR DAMAGES CAUSED BY USE OF DISINFECTANTS WHICH CONTAIN ACTIVE SUBSTANCES DIFFERENT FROM THOSE ABOVE MENTIONED.

• **ADVICES AND PRECAUTIONS**

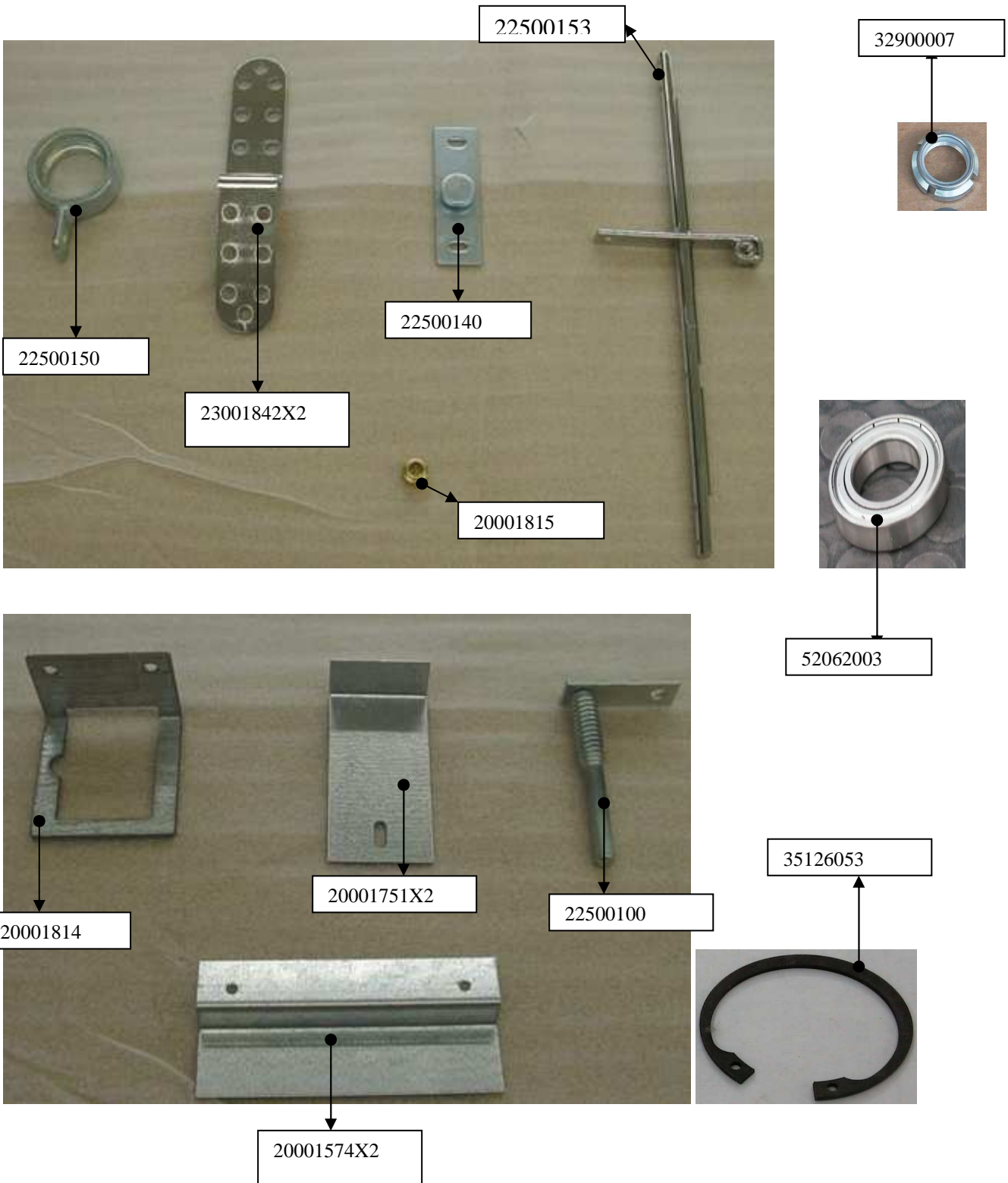


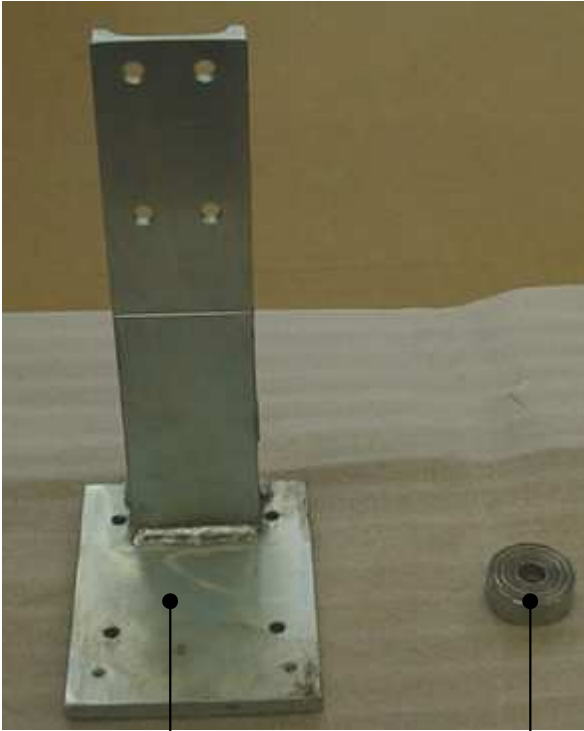
OTO P/V ELEGANCE chair is supplied with voltage tension 230Vac and it is therefore compulsory to switch off the main switch and disconnect the plug of power supply before starting any kind of operation (set up of fuses, spare parts, cleaning, etc;).



Do not lay over weights over 40 Kg on the single leg-rest when it is in horizontal position because the spring could not be able to support them!

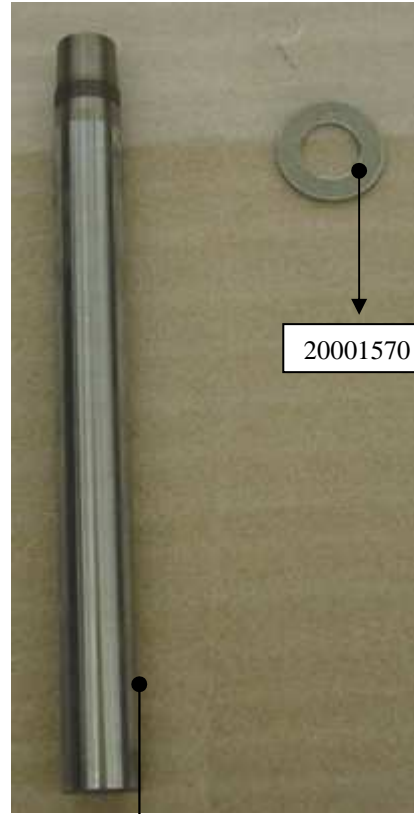
SPARE PARTS OTO P/V ELEGANCE





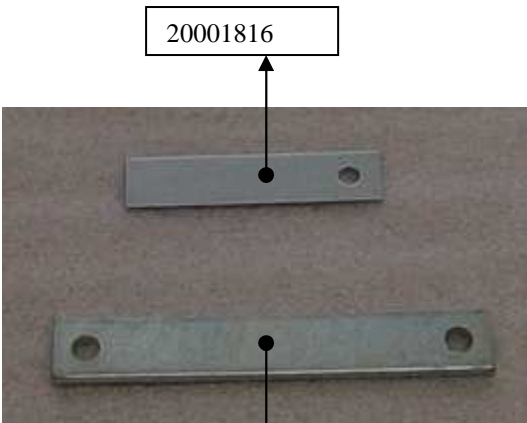
22500147

23001501



20001570

20001577

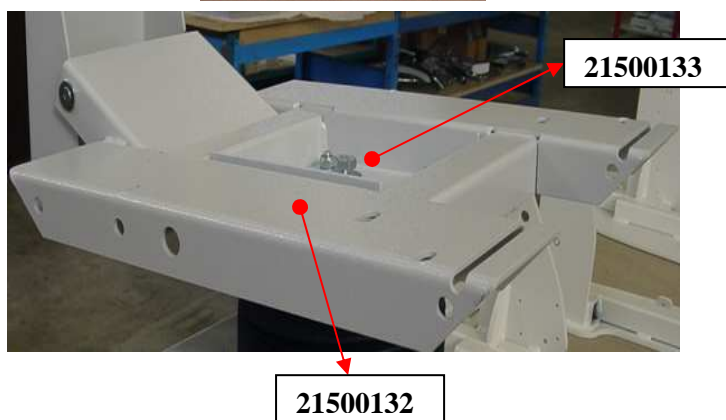
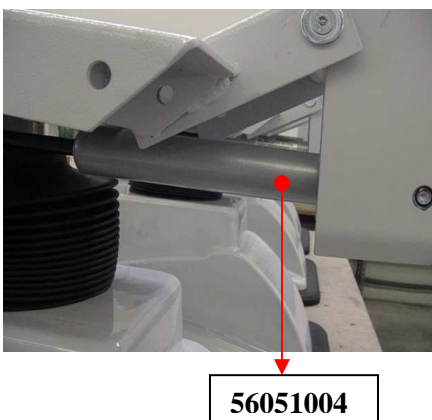
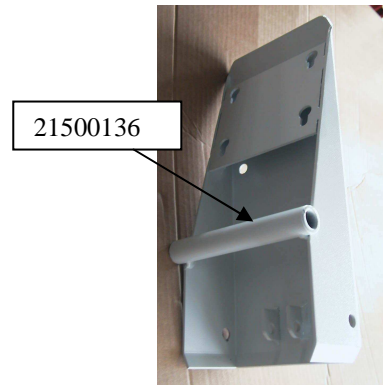
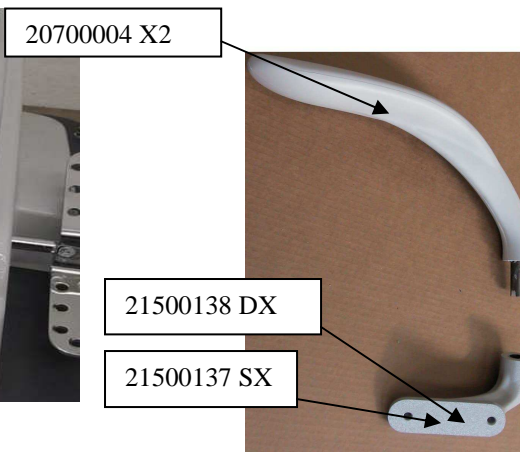
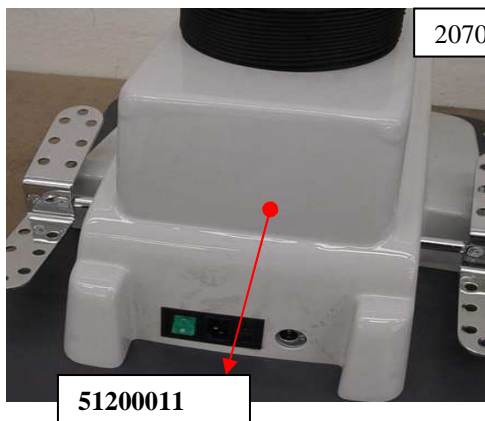
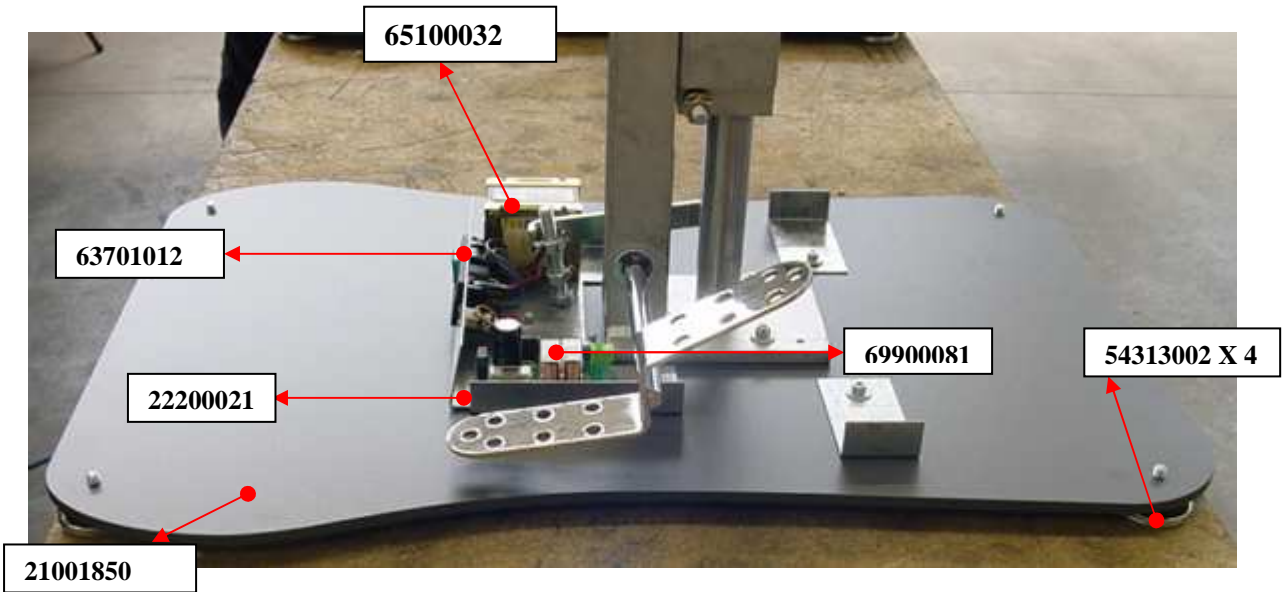


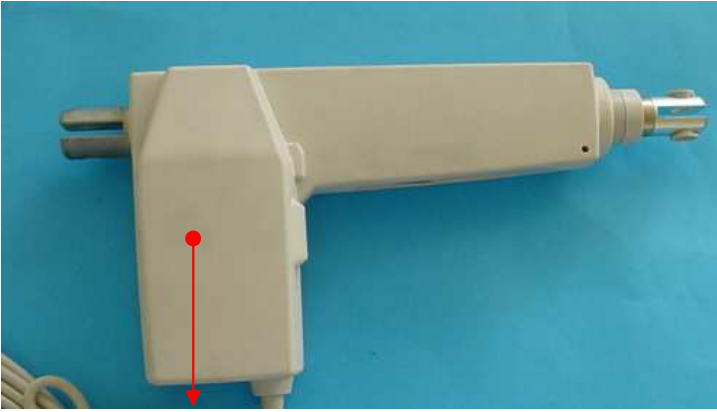
20001816

20001798



220001571





56036014

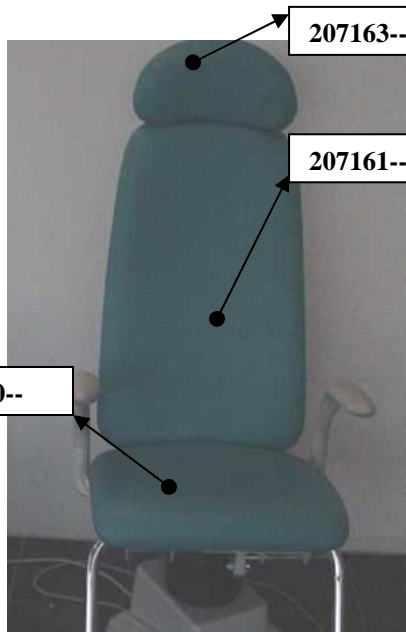


22200046

51200014

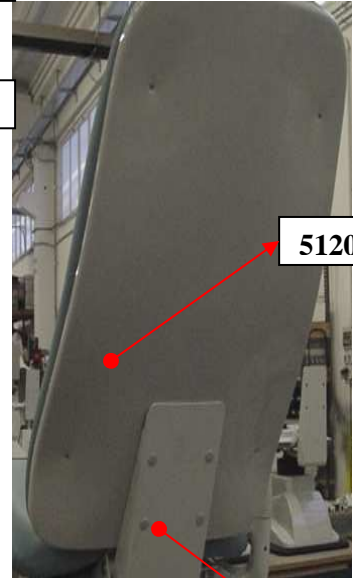


207160--



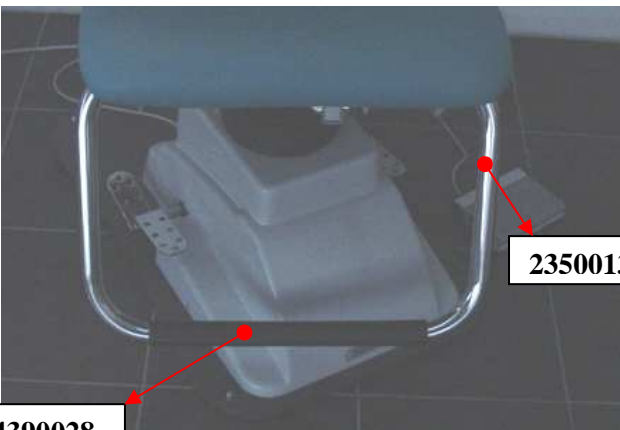
207163--

207161--




51200008

54333003X4



23500134

54390028

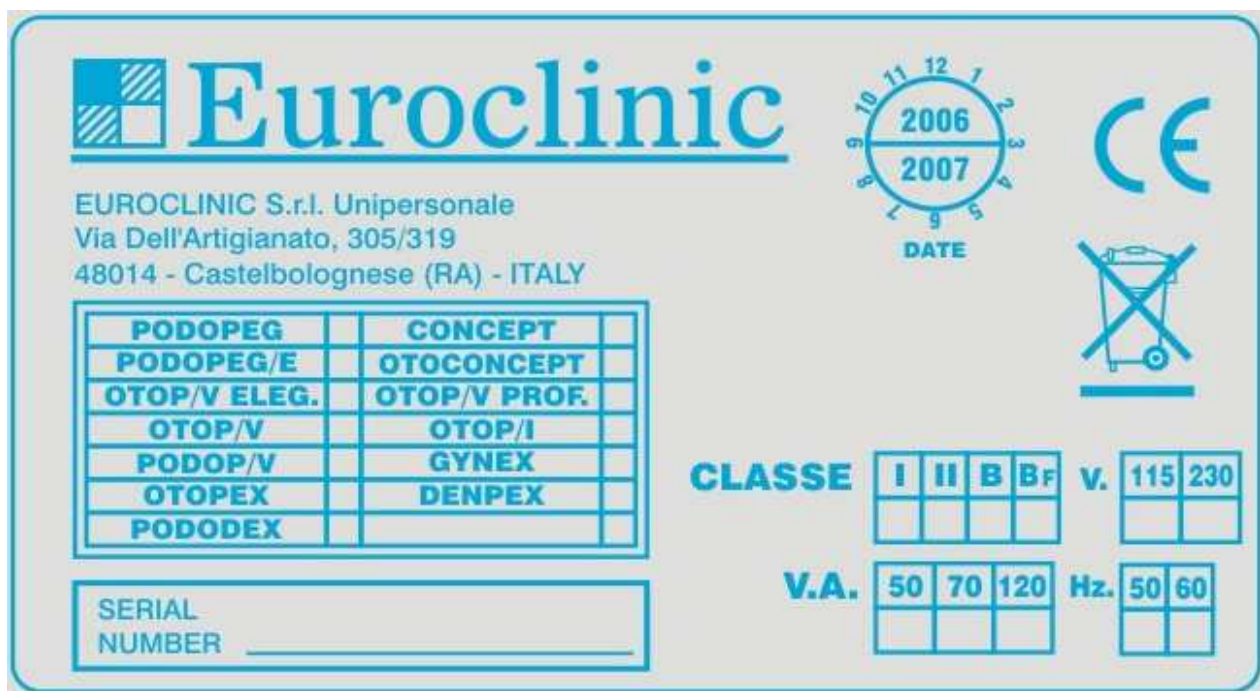
 Euroclinic Viale dell'artigianato, 305/319 40026 Castelbolognese(RA) ITALIA	Instructions Manual Version N° 00 del 08/10/2005	OTO P/V ELEGANCE 11/11
--	--	--

• **IDENTIFICATION LABEL**

The identification label of the chair is placed on the lifting arm, under the seat.

All details noted are the following:

1. The chair model is specified by a black sign beside the name.
2. In the “clock” up on the right are specified year and month of production.
3. In the charts down on the right are specified the different classes – according to safety rules on electric components – the Voltage and the Hertz values of power supply tension, the maximum consumption in Volts/Ampere of the chair.
4. Downside on the left we note in black colour – written with an indelible felt-tip – the serial-number that guarantees the identification of the chair.
5. Finally you find “CE” and discharge symbols according to EEC regulations in force.



Euroclinic
EUROCLINIC S.r.l. Unipersonale
Via Dell'Artigianato, 305/319
48014 - Castelbolognese (RA) - ITALY

DATE (clock icon): 2006, 2007

CE (CE mark icon)

Discharge symbol (waste bin icon with X)

PODOPEG	CONCEPT
PODOPEG/E	OTOCONCEPT
OTOP/V ELEG.	OTOP/V PROF.
OTOP/V	OTOP/I
PODOP/V	GYNEX
OTOPEX	DENPEX
PODODEX	

SERIAL NUMBER _____

CLASSE

I	II	B	B _F

V. 115 230

V.A.

50	70	120

Hz. 50 60